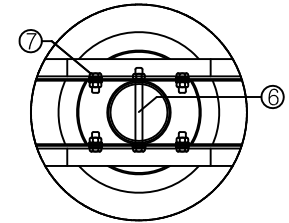
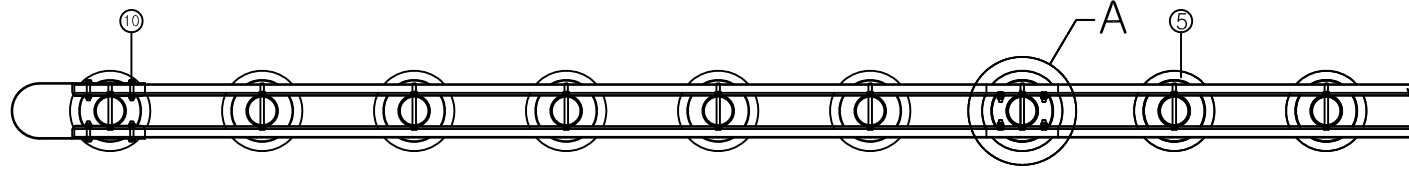
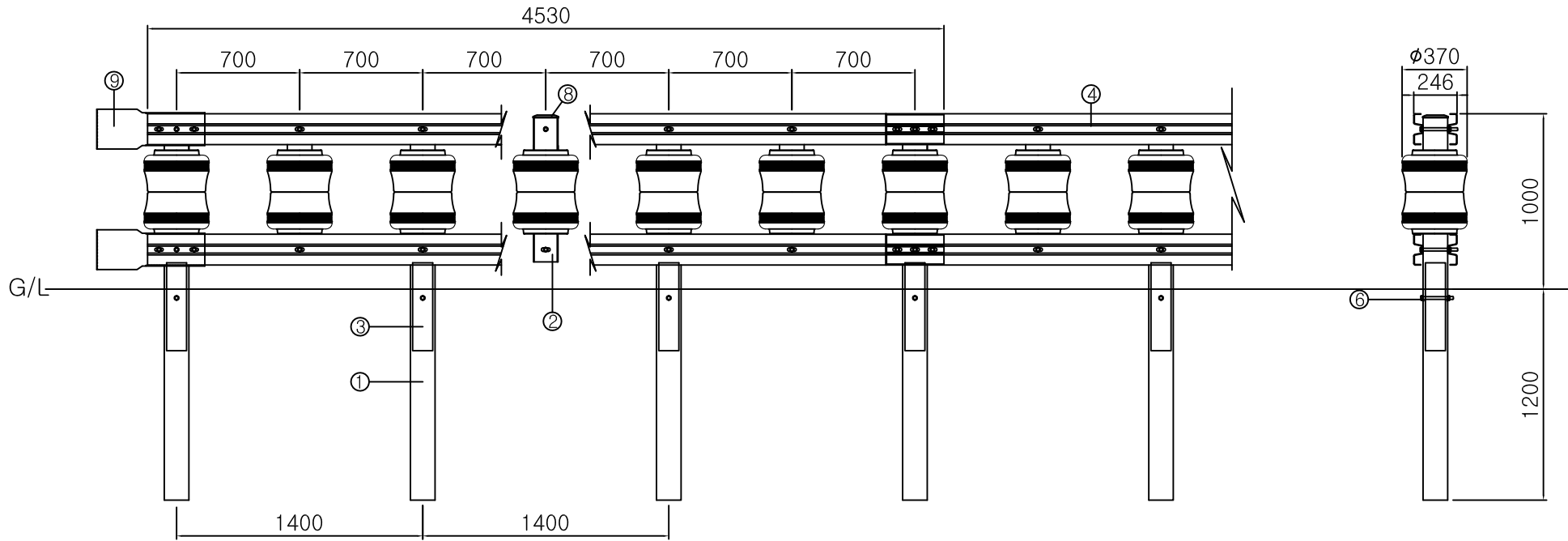


# Rolling Barrier(RGS-TL4-A)

H1000xW700 - TL4



Detail : "A"



Rolling Barrier(RGS-TL4-A)

(1 SPAN : 4200mm)

| NO | Product                  | Standard             | Unit | Quantity | Material    |
|----|--------------------------|----------------------|------|----------|-------------|
| 1  | Main Post                | □139.8X2180X4.3t     | EA   | 3        | SS400       |
| 2  | Sub Post                 | □139.8X825X4.3t      | EA   | 3        | SS400       |
| 3  | Inner Post               | □114X500X4.3t        | EA   | 3        | SS400       |
| 4  | W rail                   | 175(±2)X50X4530X3.9t | EA   | 4        | SS400       |
| 5  | Shock Absorbing Roller   | ∅370x240             | EA   | 12       | PE/Urethane |
| 6  | Hexagon Bolt/Nut/Washers | 5/8X200              | EA   | 15       | SS400       |
| 7  | Hexagon Bolt/Nut/Washers | 5/8X38               | EA   | 8        | SS400       |
| 8  | Post cap                 | ∅139.8               | EA   | 6        | SS400       |

Round rail(RGS-TL4-A)

1SPOT

| NO | Product                  | Standard         | Unit | Quantity | Material    |
|----|--------------------------|------------------|------|----------|-------------|
| 1  | Main Post                | □139.8X2180X4.3t | EA   | 0.5      | SS400       |
| 5  | Shock Absorbing Roller   | ∅370x240         | EA   | 1        | PE/Urethane |
| 6  | Hexagon Bolt/Nut/Washers | 5/8X200          | EA   | 1.5      | SS400       |
| 8  | Post cap                 | ∅139.8           | EA   | 0.5      | SS400       |
| 9  | Round rail               | -                | EA   | 2        | SS400       |
| 10 | Hexagon Bolt/Nut/Washers | 5/8X80           | EA   | 4        | SS400       |

|         |       |     |      |         |             |                |          |           |           |                               |   |
|---------|-------|-----|------|---------|-------------|----------------|----------|-----------|-----------|-------------------------------|---|
| TITLE   |       |     |      |         |             |                |          | LOCATION  |           |                               |   |
| SECTION |       |     |      |         |             |                |          | SCALE     | PLAN      | Rolling Barrier<br>H1000xW700 |   |
| AREA    | STAGE | NO. | DATE | CONTENT | TEAM LEADER | RESPONSIBILITY | DESIGNER | MODEL NO. | RGS-TL4-A | DWG. NO.                      | - |