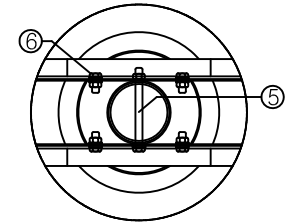
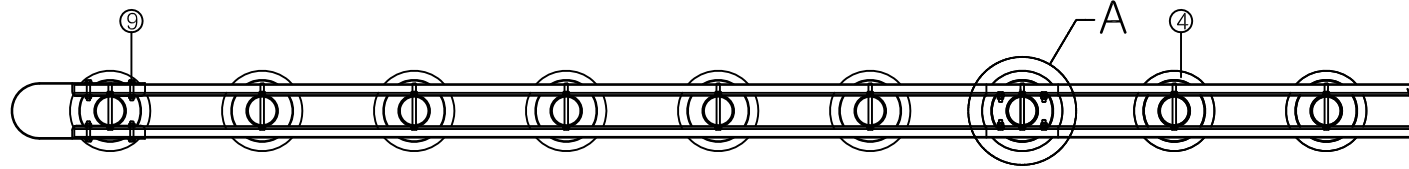
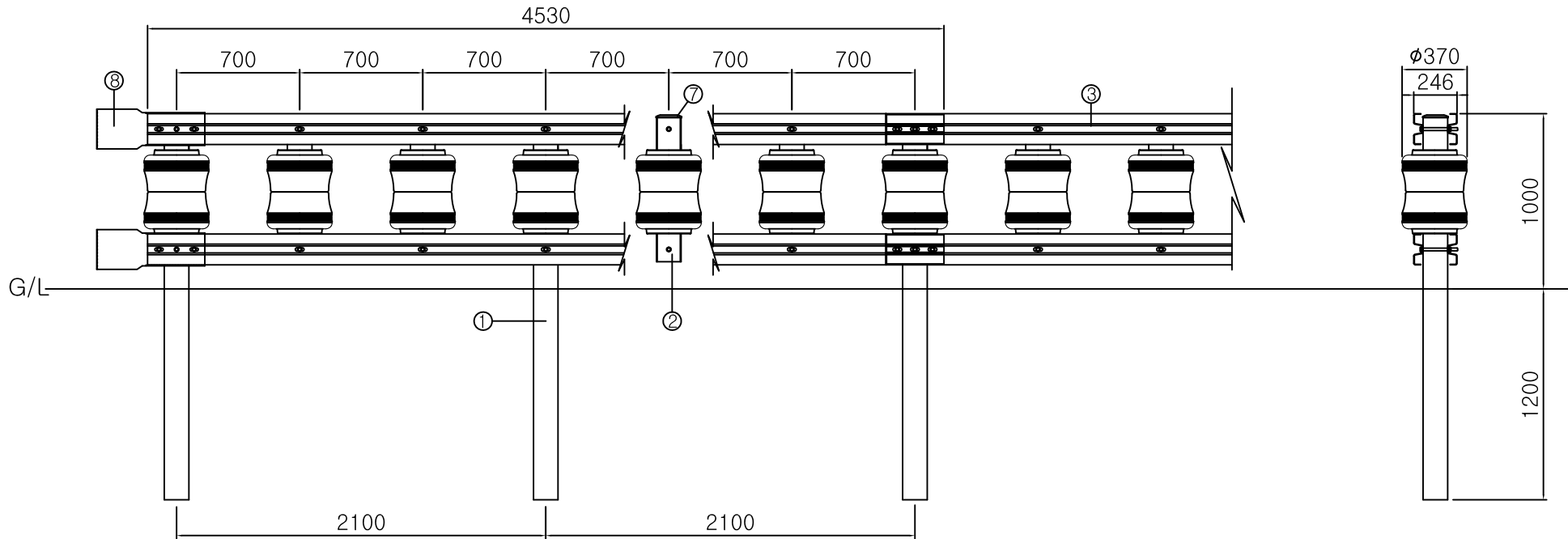


Rolling Barrier(RGS-TL3-A)

H1000xW700 - TL3



Detail : "A"



Rolling Barrier(RGS-TL3-A)

(1 SPAN : 4200mm)

NO	Product	Standard	Unit	Quantity	Material
1	Main Post	□139.8X2180X4.3t	EA	2	SS400
2	Sub Post	□139.8X825X4.3t	EA	4	SS400
3	W rail	175(±2)X50X4530X3.9t	EA	4	SS400
4	Shock Absorbing Roller	∅370x240	EA	12	PE/Urethane
5	Hexagon Bolt/Nut/Washers	5/8X200	EA	12	SS400
6	Hexagon Bolt/Nut/Washers	5/8X38	EA	8	SS400
7	Post cap	□139.8	EA	6	SS400

Round rail(RGS-TL3-A)

1SPOT

NO	Product	Standard	Unit	Quantity	Material
1	Main Post	□139.8X2180X4.3t	EA	0.5	SS400
4	Shock Absorbing Roller	∅370x240	EA	1	PE/Urethane
5	Hexagon Bolt/Nut/Washers	5/8X200	EA	1	SS400
7	Post cap	□139.8	EA	0.5	SS400
8	Round rail	-	EA	2	SS400
9	Hexagon Bolt/Nut/Washers	5/8X80	EA	4	SS400

TITLE	SECTION	AREA	STAGE	NO.	DATE	CONTENT	TEAM LEADER	RESPONSIBILITY	DESIGNER	LOCATION	SCALE	PLAN	Rolling Barrier H1000xW700
										MODEL NO.	RGS-TL3-A	DWG. NO.	-