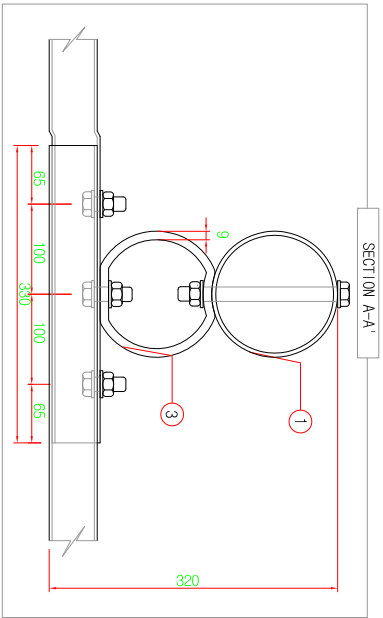
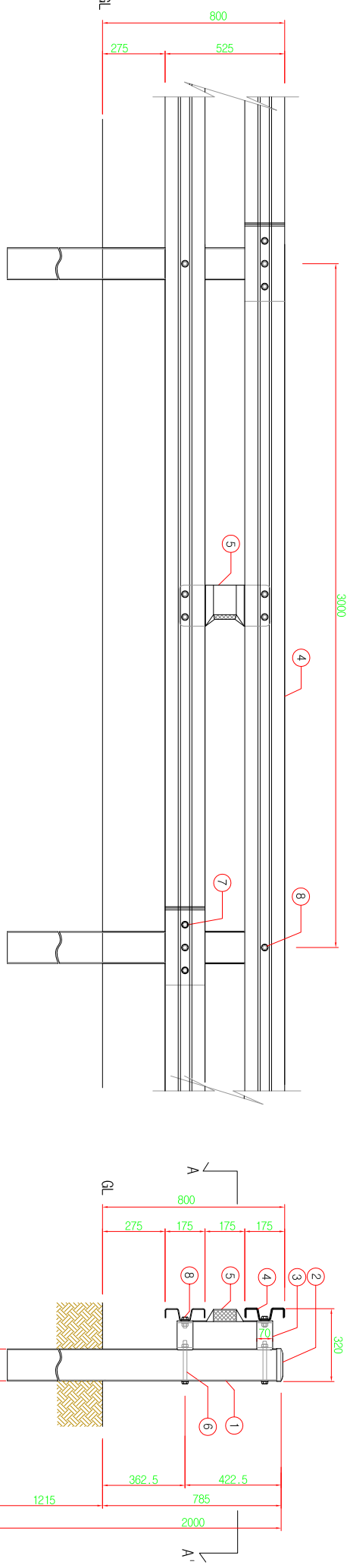
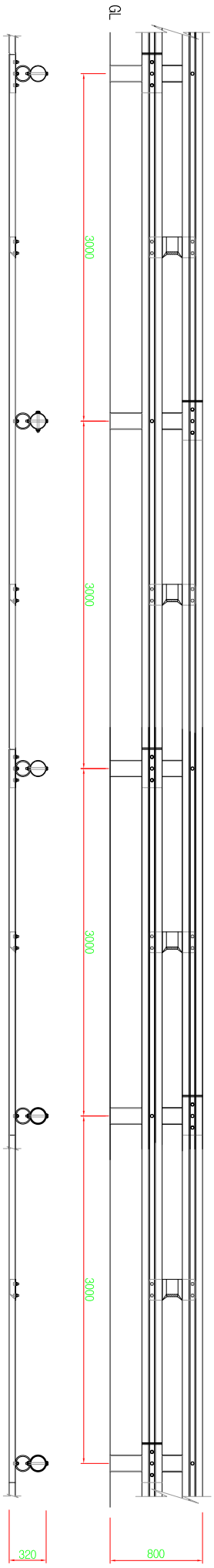


Roadside Opentype-Guardrail

H800xW3000 - N2



Roadside Opentype-Guardrail -N2

NO	Name of the product (Material)	Unit	Quantity	Note
1	POST (139.8x4.31x2000) (STR400)	pc.	1	
2	POST CAP (139.8)	pc.	1	
3	SHOCK-ABSORBING CONNECTOR (139.8x91x70) (SS400)	pcs.	2	
4	W RAIL (175x3.91x630) (SS400)	pc.	1	
5	RAIL REINFORCING PLATE (400x3.21x180) (SS400)	pc.	1	
6	CONNECTOR B/W (51.8x1180)	set	2	
7	RAIL B/W (51.8x438)	set	6	
8	RAIL B/W (51.8x445)	set	2	

PPE SPAN(H0.8mmx3.0m)

TITLE		STAGE		CONTENT		DESIGNER		DWG. NO. 3S-CE-202	
SECTION		NO.		DATE		RESPONSIBILITY		PLAN	
AREA		RI		2013.11.07		TEAM LEADER		Roadside Opentype-Guardrail	
		NO.						H800xW3000	