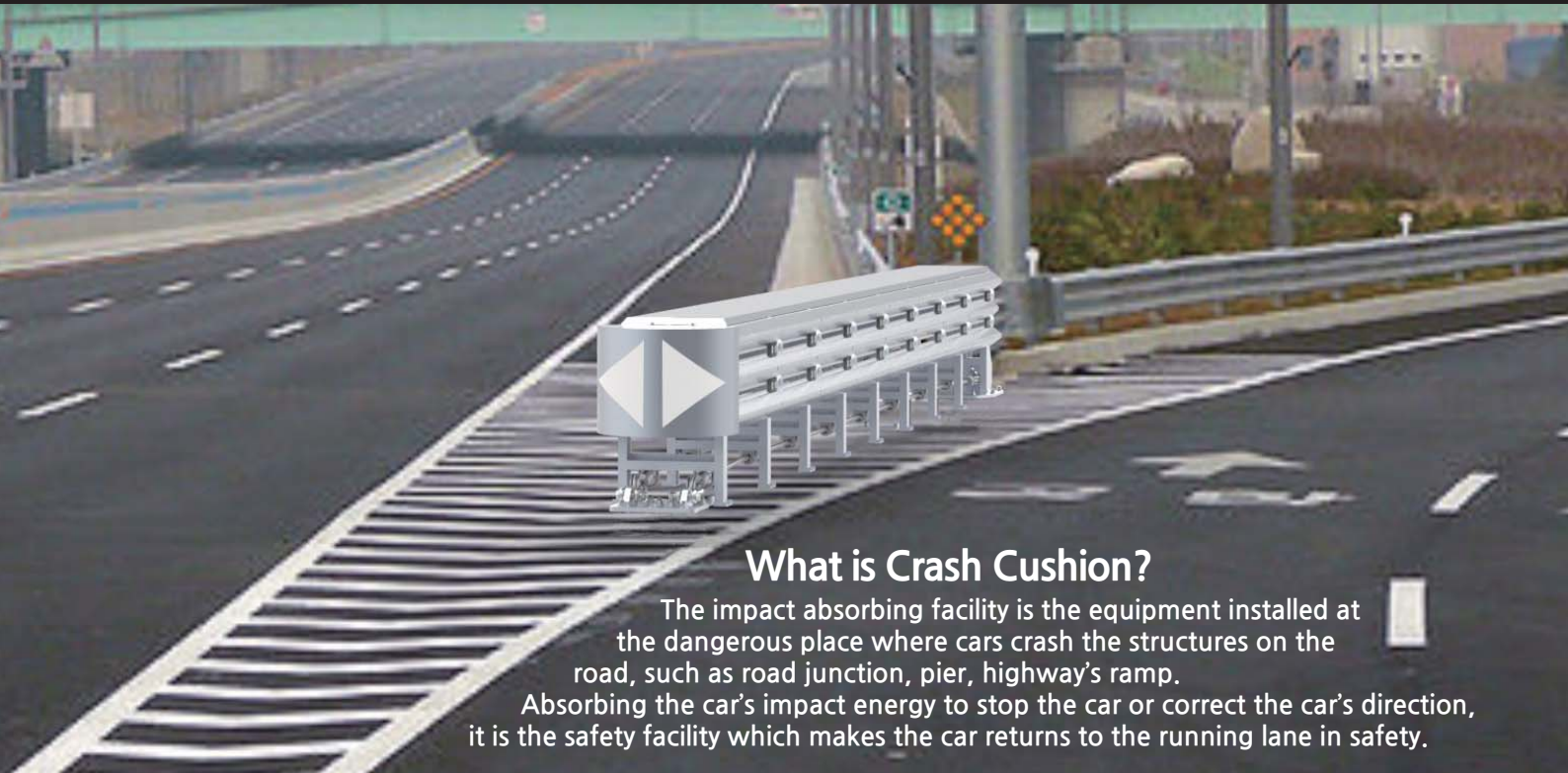


CCS II (50km · 80km · 100km · 110km)

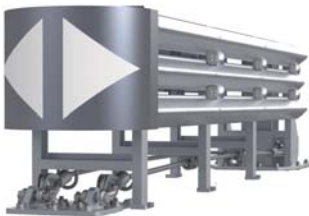


What is Crash Cushion?

The impact absorbing facility is the equipment installed at the dangerous place where cars crash the structures on the road, such as road junction, pier, highway's ramp.

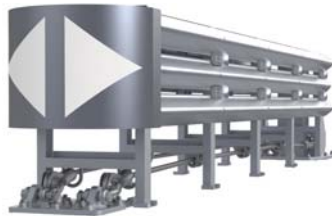
Absorbing the car's impact energy to stop the car or correct the car's direction, it is the safety facility which makes the car returns to the running lane in safety.

CCS II 50



449.02kg
L3,698.5 x W808 x H608 (mm)

CCS II 80



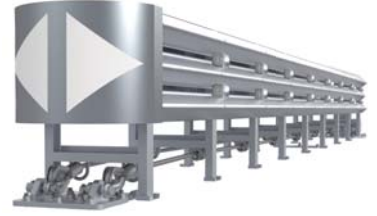
527.52kg
L4,648.5 x W808 x H608 (mm)

CCS II 100



691.02kg
L6,548.5 x W808 x H608 (mm)

CCS II 110



848.62kg
L8,448.5 x W808 x H608 (mm)

Key Features

- Reduced Weight and Narrowed width.
- Installed simply with anchors and screws : Easy Installation, Maintenance, Movement.
- No Tank and AI Absorber : more competitive price.

Key Features

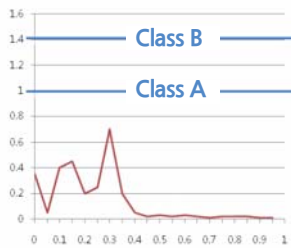


CCS II (50km · 80km · 100km · 110km)

■ [Performance] : According to EN 1317-3

Product Name	Type of Test	Performance Level Type of Test	Impact Severity
CCS2 Parallel 100	TC1.1.100	100	<u>A</u>
CCS2 Parallel 100	TC1.2.100	100	<u>A</u>
CCS2 Parallel 100	TC2.1.100	100	<u>A</u>
CCS2 Parallel 100	TC3.2.100	100	<u>A</u>
CCS2 Parallel 100	TC4.2.100	100	<u>A</u>
CCS2 Parallel 100	TC5.2.100	100	<u>A</u>
CCS2 Parallel 50	TC1.1.50	50	<u>A</u>
CCS2 Parallel 80	TC1.2.80	80	<u>A</u>
CCS2 Parallel 110	TC1.3.110	110	<u>A</u>
CCS2 Parallel 110	TC3.3.110	110	<u>A</u>

■ ASI VS Time Diagram (A level)



▲ CCS II - Parallel 50



▲ CCS II - Parallel 80



▲ CCS II - Parallel 100



▲ CCS II - Parallel 110

■ Test Video



■ Shindo Crash Cushion System II

- The Shindo Crash Cushion System is designed to protect drivers in vehicles from 900 kg to 1500 kg from road hazards. The Shindo Crash Cushion System II (CCS II), has been tested in Europe as a redirective crash cushion to the maximum 100 km/h using 1317-3 standard. To fully comply with the definition of a System Type tested crash cushion, the Shindo CCS II has been further tested at 110km/h, 80 km/h, and 50 km/h.
- The CCS II is an EN 1317-3 compliant re-redirective, bi-directional, non-gating, impact absorbing crash cushion.
- Galvanized steel product and component for durability.
- The Shindo EN1317-3 family of crash cushions provides a broad range of impact protection for a variety of hazards and speeds, yet shares the most of common components